

Turf Trade Exchange

Vol 1 May 2020

Just the Facts

Pigments - Not Just Another Pretty Face

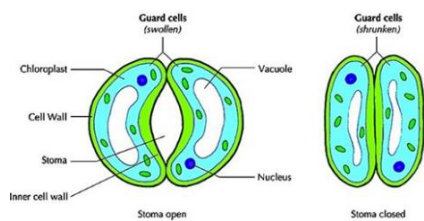
University of Florida, Ft Lauderdale Research Center

Pigments are used to mask discoloration caused by phytotoxicity or turf decline, improve and promote uniform color among different cultivars/mutations and to improve turf appearance during transition from overseeding. Research on pigments, not spray dye indicators or turf paint, shows other benefits. Research shows not all pigments are created equal.

- Increased photosynthesis, even during low light spring and fall seasons
- Enhanced turf quality and natural color
- Protection against environmental stress for improved plant health

Why Amino Acids Improve Efficacy and Longevity of PGRs, Fungicides, and Nutrients?

Purdue University, Exploratory Study



Stomatal pores are the primary entry point for many products, but only if they are open. For the stomatal pores to open, the guard cells must be full of specific molecules that draw water into these cells. Purdue University Research shows that GABA (gamma-aminobutyric acid) is one of the molecules that influences the opening of stomatal pores.

The Amino Acid L-glutamic acid quickly converts into GABA. It then finds its way into guard cells, flexing them open, allowing for fast movement of the spray solution into the turf and more efficient movement up and down throughout the entire turf cell.

Turf Pulse

"OMG. 27-0-17+BioFusion+Bio-Mas, 3 days after spray... GORGEOUS."
Superintendent, New Jersey

"My customers saw the best green up response and growth this spring. Turf Trade custom fertilizer formulation, 18-0-4 20% AMS + 25% Defend + .10 Dimension, best I've seen in all my years in business." LCO, Delaware

"The iGo paint machine from Linemark International is a HUGE help to us at Woodstown High School. We are a staff of two so not having to mix paint is a huge time saver. It's also light weight and electric; I can easily pick up and load on a Gator. No trailer, bulky five-gallon containers or gas to transport. I honestly do not know how we could paint all of our spread-out fields in a timely fashion if we didn't have this machine." Sports Turf Manager, New Jersey



Photosynthesis Trial
March 2013

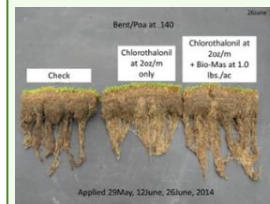
1 Turf Screen	39.4 ab
2 T Dormant	30.5 bc
3 Mix	31.3 bc
4 Signature	36.5 abc
5 PAR	26.9 bc
6 Copper	30.1 bc
7 Check	23.9 c
8 Appear	38.7 abc
9 Verdant	46.9 a
10 Transition HC	31.9 bc

Photosynthesis values, Post applications
 $\mu\text{mol CO}_2 \text{ m}^{-2} \text{ leaf area s}^{-1}$

Featured Products

Bio-Mas - 7+ products in one

Made by a superintendent
Contains amino acids, plant hormones, humic and fulvic acids, cytokinins, carbon, silicon, and many essential and beneficial elements.



Verdant - Growth and Recovery

- Most researched pigment
- Highest photosynthetic activity in research trials
- Safe tank mix partner
- Voted most natural color

Foundation 40 - Turf Health and Improved Product Efficacy.

Contains glutamic acid and other beneficial amino acids. Spray turf prior to the onset of stress to help turf standup to disease, drought, heat, traffic, low mow heights.

Did You Know?

The Amino Acids Proline and Glycine Betaine manage water in the turf cell. Turf can better regulate transpiration and respiration and respond to water induced stressors.

Research shows that iron, a poorly transported mineral, is dissolved, complexed and transported into turf much more efficiently with amino acids. A low-molecular weight piggyback ensures easy access and improved translocation of iron.

Because what's in the jug/bag matters. Proudly hand selecting high quality ingredients for your success.

856.478.6704

www.theturtrade.com

