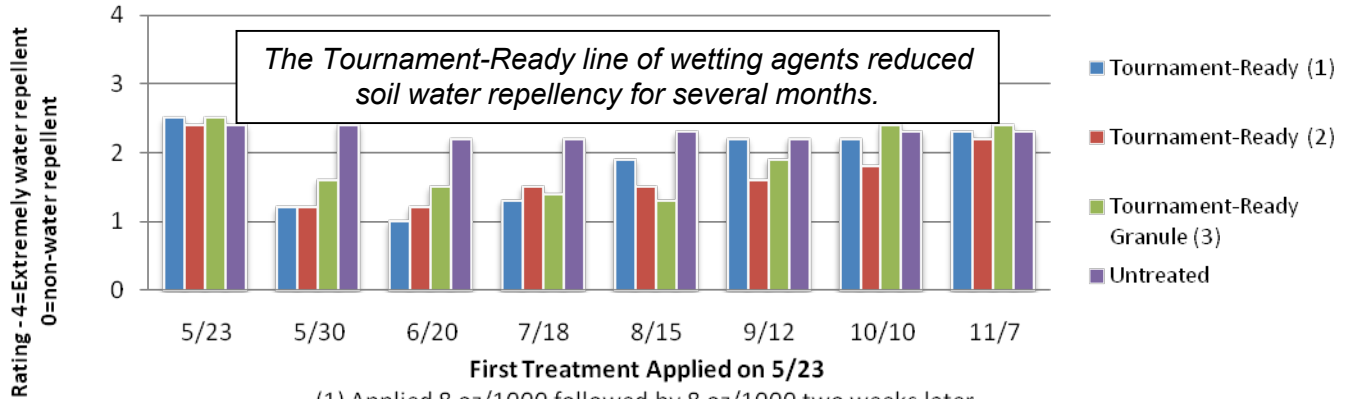


University of Georgia - Effects of Wetting Agents

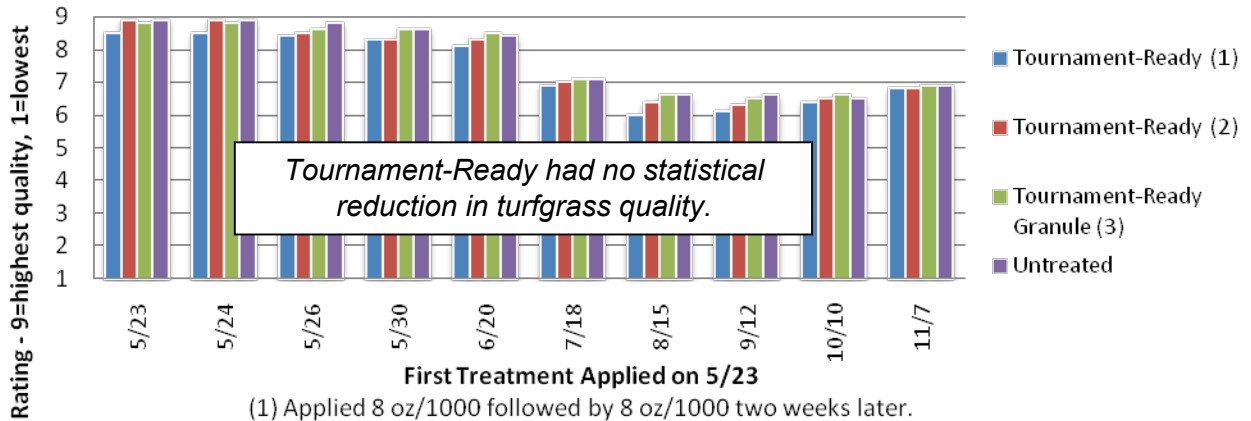
Study evaluating the performance of the Tournament-Ready® line compared to an untreated check.

Soil Water Repellency



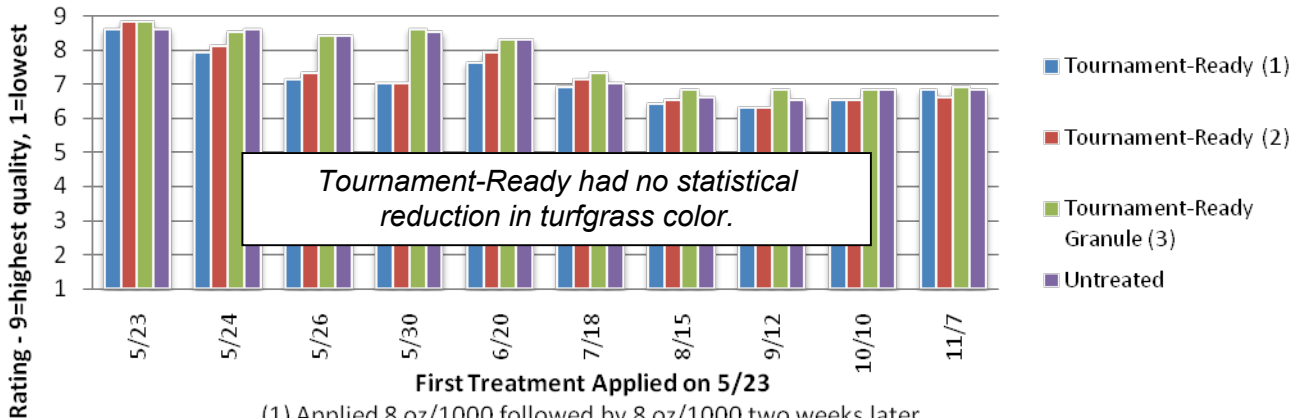
- First Treatment Applied on 5/23
- (1) Applied 8 oz/1000 followed by 8 oz/1000 two weeks later.
 - (2) Applied 8 oz/1000 followed by 4 oz/1000 monthly for 4 months.
 - (3) Applied 2 lbs/1000 followed by an application every 3 weeks.

Turf Quality Ratings



- First Treatment Applied on 5/23
- (1) Applied 8 oz/1000 followed by 8 oz/1000 two weeks later.
 - (2) Applied 8 oz/1000 followed by 4 oz/1000 monthly for 4 months.
 - (3) Applied 2 lbs/1000 followed by an application every 3 weeks.

Turfgrass Color



- First Treatment Applied on 5/23
- (1) Applied 8 oz/1000 followed by 8 oz/1000 two weeks later.
 - (2) Applied 8 oz/1000 followed by 4 oz/1000 monthly for 4 months.
 - (3) Applied 2 lbs/1000 followed by an application every 3 weeks.